

ToolTrack™

Check-In/Check-Out Asset ID Systems

The ultimate safety and accountability solution for your in-house asset and tool tracking applications.

Bring a proven, established tool and asset tracking solution to your facility. The Northern Apex Tool and part tracking solution has met the Tracking, Safety and Accountability requirements in one of the most strictly regulated industries in the world—nuclear power.

Barcode and RFID options for tracking

Works equally well tracking tools, equipment, weapons, artwork, you name it! If you need to identify it, ToolTrack™ Check-In/Check-Out can track it. Depending on the asset value, your entire investment in the asset ID and tracking system could be recouped by eliminating the loss of just one asset.

Ideal to track assets almost anywhere, including:

- ▶ Tool Crib
- ▶ Test, Calibration and Instrumentation
- ▶ Stockroom
- ▶ Production Floor
- ▶ Lab
- ▶ Facility Maintenance
- ▶ Security Checkpoints
- ▶ Stockroom
- ▶ Item Rental
- ▶ Foreign Material Exclusion (FME)

Meets Tracking, Safety and Accountability requirements in the Nuclear Power Industry



Features

▶ Simple to Deploy

All you need is the Check In–Check Out Software, Barcode or RFID Tags and a Scanner

▶ Maximizes Asset Visibility and Security

System tracks high value assets, confirms item in/out status, links item history with employee ID; quickly locates “lost” assets; system can even verify calibration

▶ Optimizes efficiency

Paper check in forms and hand written logs eliminated; faster check in/out; assets auto-identified when scanned; asset inventory/reconciliation quick and accurate; automatically generates reports.

Software

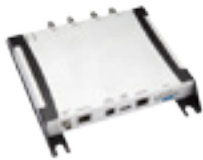
Our proprietary software is ready to go without the expensive development costs.

- **Host Software**
- **Software Licenses**
- **Annual Software Support**



Hardware

Our suite of hardware has been carefully designed to work together to provide optimum performance.



2 Port RFID Reader



RG 900 INT Reader



RG Radiant Wand



10" Flat Antenna



Carrying Case

Radio Frequency Identification (RFID), Data Matrix or Barcode Tags

100 RFID tags are included in the price of the standard kit.
(The price will be adjusted if you choose Barcode or Data Matrix tags).
This flexibility allows you to choose the tag that is right for your application and facility.

Not sure what tag is right for you? Our engineers will help you select the right tag for your tool or other asset—wood, metal, electronics or other material.



RFID Tags



2D Data Matrix Tag



Barcode Tag